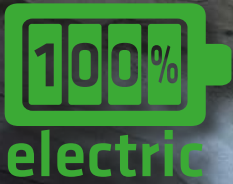


NEW!



# Aliva<sup>®</sup>-520 Shotcrete system

## IDEAL FOR MINES AND TUNNELS

### ■ Available with battery or diesel drive

For driving the spraying system is available with a diesel engine or with an electric drive. The traction batteries are charged during spraying so that the spraying system never gets stuck at the job site and moves emission-free with the two maintenance-free synchronous motors.

### ■ Agile for challenging applications

The modern Aliva<sup>®</sup>-520 concrete spraying system is ideal for small to medium-sized tunnels or galleries in mines. Due to the extraordinary short turning radius it is very agile and the robust construction makes the Aliva<sup>®</sup>-520 durable and reliable.

### ■ Rugged spraying arm and high performance

With a maximum spraying height of 10 m, the Aliva<sup>®</sup> Converto RoboSpray, the proven double piston pump Aliva<sup>®</sup>-272 - with an output of 20 m<sup>3</sup>/h - and the 75 kW - 12 m<sup>3</sup>/min air compressor, best spraying results in a large working area are guaranteed.

aliva<sup>®</sup>

BUILDING TRUST



# Aliva<sup>®</sup>-520 Shotcrete system

## DURABLE, AGILE AND POWERFUL

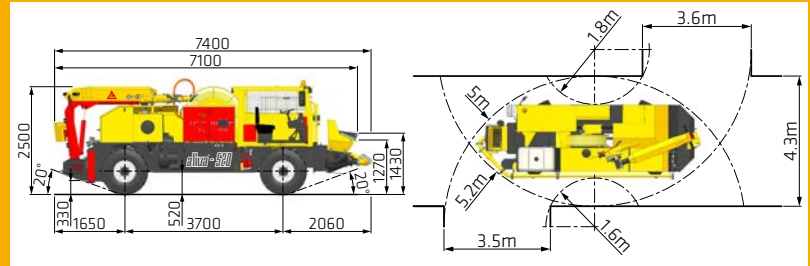
The chassis is built with two long end to end steel plates making it very sturdy. Due to this design the largest possible wheel angle is achieved, enabling an extraordinary short turning radius. The rugged Aliva<sup>®</sup>-304 spraying arm allows a spraying height of 10 m. The spraying arm and the concrete pump Aliva<sup>®</sup>-272 are powered by a 55 kW drive. A built-in 75 kW compressor guarantees enough capacity as it supplies an air flow of 12 m<sup>3</sup>/min. The outputs of the concrete pump and the dosing unit can be adjusted directly at the radio remote control and the values are shown on the display. The Aliva-520 is definitely your first choice for a shotcrete system.

### TECHNICAL SPECIFICATIONS

Shotcrete Equipment	
Total weight (empty)	10'920 kg
Max. load front axle	5'455 kg
Max. load rear axle	5'465 kg
Transport dimensions	L7100 x B2200 x H2500
Compressor	75 kW - 12m <sup>3</sup> /min at 7,5 bar
Aliva-272 concrete pump	Conveying pressure max 80 bar
Theoretical output	3...20 m <sup>3</sup> /h
Grain size	Max. 16 mm spraying / 32 mm pumping
Spraying arm Aliva-304	Max. height 10 m (with 1.2 m spraying distance)
Nozzle Converto RoboSpray	DN65 / DN80 with outlet 45 mm, with anti-kink coil
Head lights	LED 2 x 4200 lm (IP67)
Liquid dosing unit Aliva-403.6	Squeeze rotor-hose pump for liquid additives
Electrical	0.75 kW - 400 V - 50/60 Hz - IP55
Output	30 - 700 l/h (max 10 bar)
Cable drum	Hydraulic cable reel, manually proportional operated
Cable length / type	50 m or 100 m / 4x95 mm <sup>2</sup> + 3G16 mm <sup>2</sup> (3.76 kg/m)
Electrical connection box	400 V 50/60 Hz - IP55
Max. connection load	270 A with stand still slip ring (4h cycle)
Hydraulic power pack	Variable piston pump and two gear pumps
Electrical	55 kW - 400 V - 50/60 Hz - IP 55
Electric control box	Specially designed for Tunnelling & mining conditions 400 V - 50/60 Hz - IP65 with 7" Display
Remote control	Radio remote control (2.4 GHz), 25 m cable included
Accelerator tank	600 liter IBC accelerator tank for liquid additives
High pressure Water pump	200 bar 15 l/min 15 m hose (Optional)
Carrier electric	
Motor Torque	2 x 1150 Nm / 2 x 90 kW
Electrical	Nominal 400 V - IP65 - 93%
Batterypack	277 Ah or 106 kWh
Charging time	approx. 5 h with 20 kW
Axles	Dana Spicer <sup>®</sup> Planetary drive axles 4WD 4 wheel-, crab- or front only steering Service-free wet disc and SAHR break (P) Front bolted / rear pendulum axles
Tyres	Multipurpose 365/80 R20 or Industrial
Cabin	ROPS-FOPS, 180° swivelling seat
Travel performance	Low speed: 0-10 km/h - High speed: 0-20 km/h
Slope	max. 30%
Hydraulic stabilizer	Horizontally and vertically extendable Max. load 4'500 kg
Lights	4 x LED driving and 4 x LED working

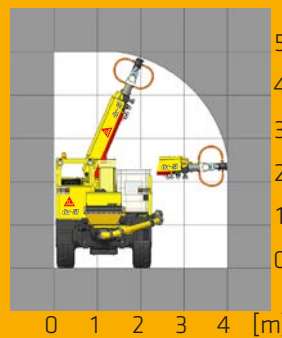
Prior to use or processing, always consult the current instruction manual of the products used. The current version of our respective General Terms and Conditions applies.

### DIMENSIONS

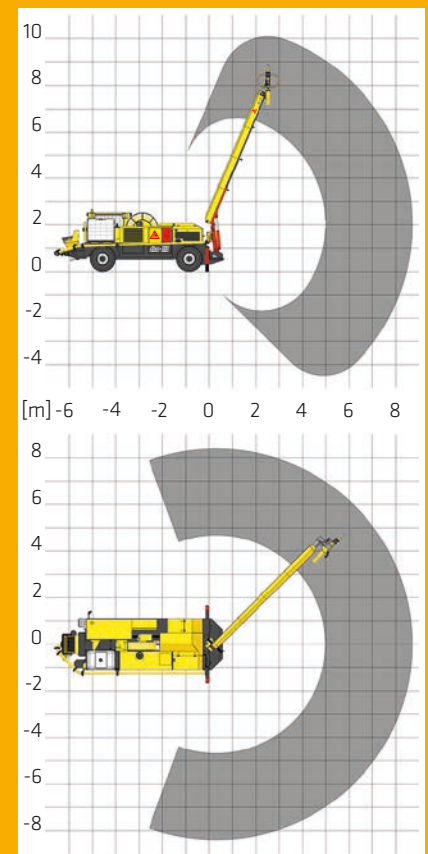


### TURNING RADIUS

### SPACE REQUIRED



### SPRAYING AREA



Carrier diesel	
Engine	approx. 85 kW / 117 hp
Perkins / Deutz	Tier III / Tier IV / Stage V
Torque	475 Nm
Transmission	Two stages hydrostat
Electric	24 V with 2x100 Ah Battery



**SIKA SCHWEIZ AG**  
Aliva Equipment  
Tüffenwies 16  
CH-8048 Zürich  
Switzerland

**Contact**  
Phone +41 58 436 32 22  
Fax +41 58 436 41 40  
www.aliva-equipment.com  
aliva.equipment@ch.sika.com

**aliva**

**BUILDING TRUST**

